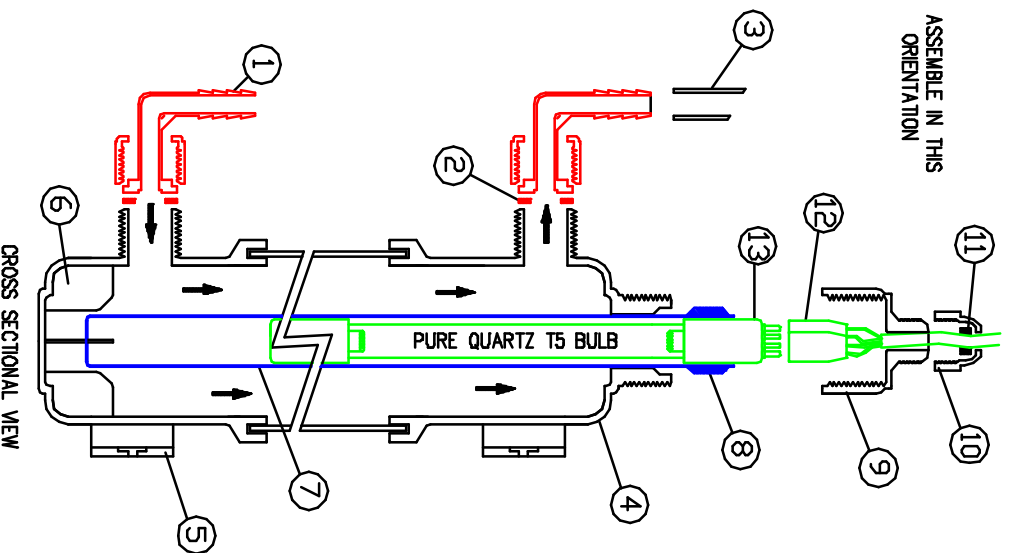


# D/D High Efficiency T5 Ultra-Violet Steriliser Range.

## For Aquariums and Ponds.

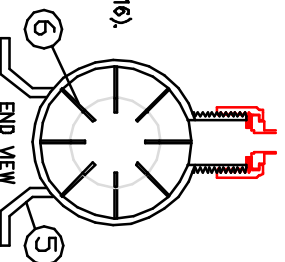
Another innovative product range from D/D Aquarium Solutions Ltd.

ASSEMBLE IN THIS  
ORIENTATION



### KEY.

- 1 - LUMINOUS HOSE TAILS (SINGLE UNITS ONLY).
- 2 - RUBBER WASHER.
- 3 - HOSE DIAMETER (10W-9/12) (20W-12/16) (39W-12/16).
- 4 - UV RESISTANT PLASTIC BODY.
- 5 - MOUNTING FEET.
- 6 - LOCATING FINS FOR QUARTZ SLEEVE.
- 7 - QUARTZ SLEEVE.
- 8 - VITON GROMMET (PART RUM261)
- 9 - SLEEVE SEALING CAP.
- 10 - CABLE SEALING CAP.
- 11 - GROMMET.
- 12 - PLUG AND LEAD TO ELECTRONIC BALLAST BOX.
- 13 - QUARTZ BULB.



**FEATURES**  
 Quartz UV-C lamp . Conventional glass lamps lose on average 50% of their output as the U.V. passes through the actual tube itself. 'Electronic' ballast reduces flickering and therefore extends the working life of the bulb up to 9000 working hours.  
 Pure quartz sleeve to protect the bulb without transmission losses and to maintain the temperature of the bulb.  
 Viton Gasket, (UV resistant).  
 Reinforced UV resistant body.  
 Waterproof body to CE IP67.

### ASSEMBLY

Great care must be taken during assembly as the quartz sleeve is very delicate and can be easily broken especially on the longer units. The sleeve and the bulb used in this unit are both made from quartz and should never be touched with bare fingers. Ensure that the lamp is disconnected from the mains electricity supply during installation.

**NEVER UNDER ANY CIRCUMSTANCES LOOK DIRECTLY AT THE UNSHEATHED U.V. TUBE WHEN ILLUMINATED.** If this occurs for any length of time please seek medical advice as severe damage can be caused to the retina through U.V. exposure.

To assemble, hold the body of the unit vertically and gently lower the quartz sleeve into position holding onto the Viton sleeve grommet only. Do not allow the sleeve to drop and do not force into position. When correctly fitted the sleeve should fit easily in place and be cradled by the plastic fins inside the end of the housing. If the sleeve has been supplied without the grommet pre-fitted then this should be assembled first. Connect the quartz bulb onto the end of the flex using the 4 pin plug and lower as vertically as possible into the sleeve holding onto the ceramic end cap only. No resistance should be felt on lowering. Tighten on the threaded end cap without using excessive force so that the sleeve grommet compresses against the housing, (hand tight only). The cable sealing cap can also be tightened against the flex at this point. Screw on the hose tail connectors remembering to fit the supplied washers between the body and the connector. The hose tails can be positioned in any direction depending upon the specific installation parameters.

The unit can now be located in its final position and if required, fastened down utilising the slots on the feet for screw fixings. It is possible also to mount the housing vertically on a wall or suitable surface. If this orientation is chosen, it is recommended that the copped end is installed upper most. When installed in this way it is important that water enters at the bottom and exits at the top of the unit to prevent a pocket of air forming that would otherwise expose the quartz sleeve.

Supply water to the unit checking that no leading appears at the threaded cap. If this occurs it suggests that the sleeve has become broken. Regulate the water to the U.V. until the correct flow is obtained for the wattage, (see chart). Exceeding this flow rate will reduce the effectiveness of the unit. Conversely reducing the flow rate will increase the radiation by about 90% proportionally.

Do not pressurise the unit by fitting any tap or restriction after the outlet of the U.V. as this may break the quartz sleeve.

It is possible to allow the unit to be run dry without melting however the unit must be allowed to cool fully before refilling with water. Plug the trailing lead from the U.V. into the socket on the ballast housing and plug the ballast into the mains. The ballast is supplied with a European plug and will require a low cost 3 pin adaptor for use with a UK socket. The power can now be supplied to the unit. Observe the fluorescent hose tails whilst the room is in darkness to ensure that the bulb is working.

### MAINTENANCE

Every 6 months the quartz sleeve should be removed and cleaned using alcohol only. The bulb will reduce in effectiveness by 70% of its maximum after 1 year, (9000 hours) and should be replaced.

MODEL NUMBER	BULB REFERENCE	SLEEVE REFERENCE	WATTAGE (55000 MICROWATTS/SEC/SEC/CM)	FLOW RATE	INDICATION OF SUITABLE TANK / POND SIZE		
					REF SYSTEM	FISH (HIGH STOCKING)	POND CAPACITY
RUM201	GFH212T5L	RUM254	10 W	500 L/hr	250-500 L	125-250 L	2000 L
RUM202	GFH43T5L	RUM255	20 W	1,000 L/hr	500-1000 L	250-500 L	4000 L
RUM203	GFH840T5L	RUM256	39 W	2,000 L/hr	1000-2000 L	500-1000 L	8000 L
RUM204	GFH840T5L	RUM256	2 x 39 W	4,000 L/hr	2000-4000 L	1000-2000 L	16000 L
RUM205	GFH840T5L	RUM256	4 x 39 W	8,000 L/hr	4000-8000 L	2000-4000 L	32000 L

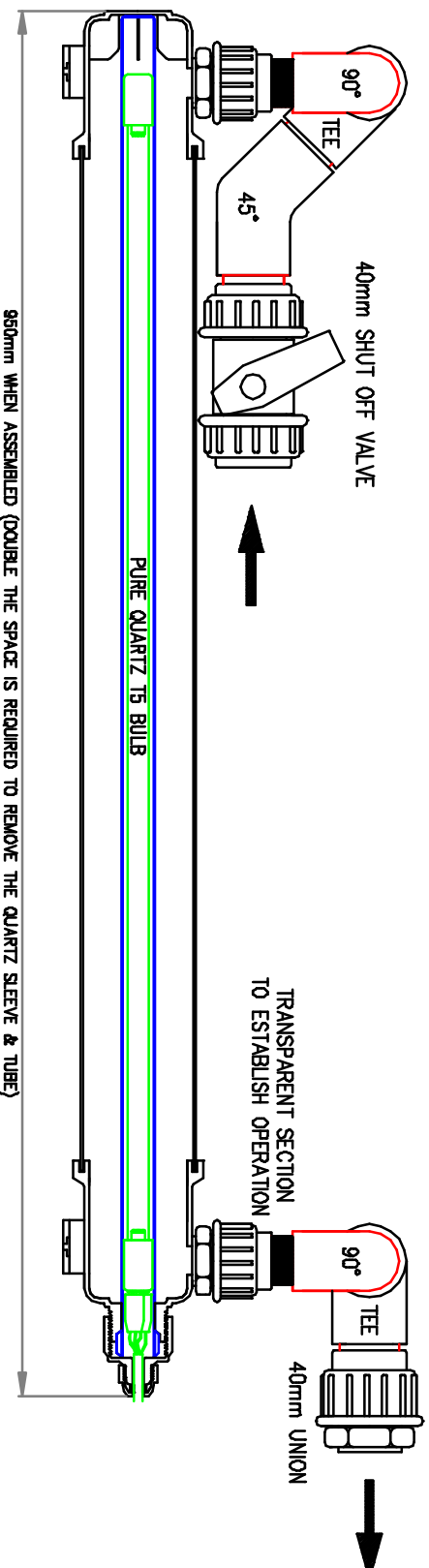
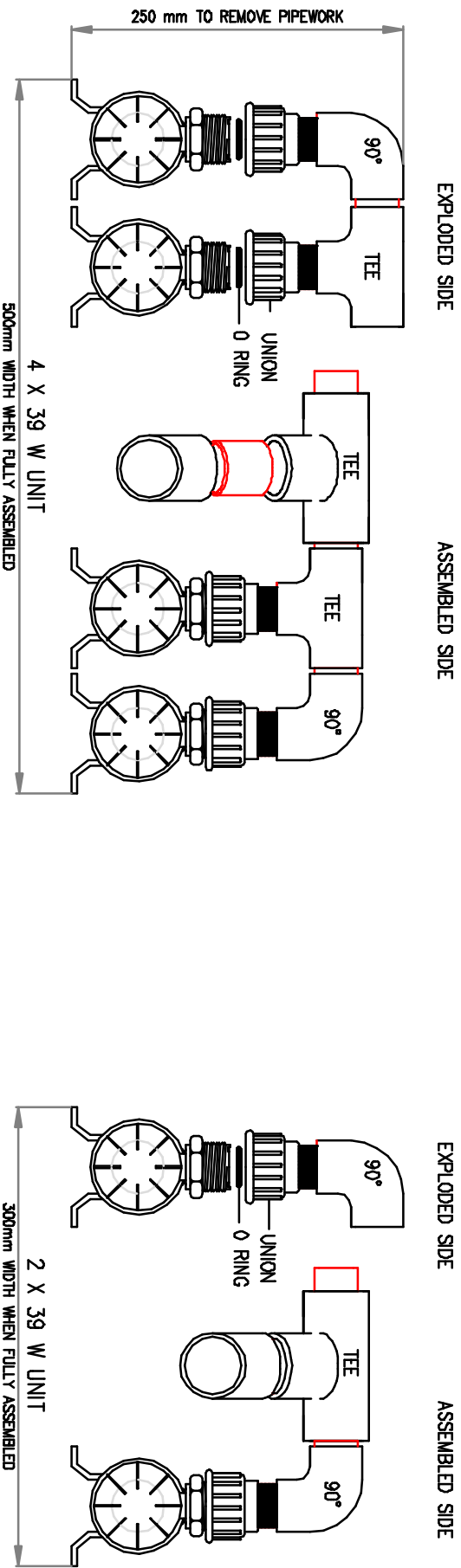
For more information on this or any of our other products please visit our web site or call us on: -

[www.d-daquariumsolutions.com](http://www.d-daquariumsolutions.com)

Telephone - +44 (0)20 8501 2492

Fax - +44 (0)20 8500 9102

# D2D High Efficiency T5 Ultra-Violet Steriliser Range. For Aquariums and Ponds.



## Assembly Instructions for Multiple 39 Watt Units

[www.d-daquariumsolutions.com](http://www.d-daquariumsolutions.com)

Telephone - +44 (0)20 8501 2492

Fax - +44 (0)20 8500 9102

**ALWAYS STAND UNIT VERTICALLY TO INSERT AND REMOVE QUARTZ SLEEVE AND BULB.**